



# Product Highlights



Phone Cases -----	Page 3
Tablet Cases -----	Page 10
Headsets -----	Page 15
Webcams -----	Page 20
Docking Stations -----	Page 22
Adapters -----	Page 27
Cables-----	Page 29

Great for  
Public  
Sector



## Matte Silicone

- Full back and side protection case with a brushed textured back
- Made from premium, flexible and shock absorbent silicone
- Super thin and lightweight design with an air cushioned structure that protects the phone from accidental damage
- Precise cut-outs allow full access to all functionalities and ports
- Side buttons allow optimal responsive operation
- Compatible with wireless charging devices



## JLC CLEAR GEL

- Full back and side protection case
- Made from a strong, durable and transparent soft silicone to enhance the design of your phone
- Ultra-thin and lightweight design with cut-outs, allows access to all the phones features and ports
- Non slip and shock resistant material helps to prevent accidental damage and scratches
- Compatible with wireless charging devices



## JLC HALCYON

- Full back and side protection bumper case
- Made from hard a clear silicone back with soft silicone raised edge help to protect the screen
- Precise cut outs allow easy access to all the phones features and ports
- Durable and anti-scratch material helps to prevent accidental drops and damage
- Compatible with wireless charging devices



Rugged




## JLC Fibre

- Full back and side protection case with a textured design
- Made from a sturdy and durable silicone which provides a soft and comfortable grip
- Shock absorbing materials help to protect the phone from accidental damage
- Precise cut-outs allow full access to all functionalities and ports
- Side buttons allow optimal responsive operation



## JLC EcoTec

- JLC are proud to be supporting the environment by offering our eco-friendly case which is made from 20% wheat straw and 80% recycled TPU
- The case is degradable and can be recycled with local recycling centres (please check with your local recycling centre)
- Raised edges and anti-slip material protect the screen and camera from accidental damage
- Full access to all ports and functionalities
- Supports wireless charging

 Eco Option



## JLC Executive Wallet

- Full front, back and side protection wallet case with a silicone interior case to hold the phone securely in place
- Made of high quality faux textured leather with inside slots to store credit cards, notes or business cards
- Precise cut-outs allow full access to all functionalities and ports
- Magnetic closing clasp helps to keep the phone protected
- Movie stand feature allows hands-free access for calls and video calls
- Compatible with wireless charging devices

 Rugged



## JLC Oxford

- Full back and side protection case with a patterned back
- Made from thick premium, flexible and shock absorbent silicone
- Lightweight design with an air cushioned structure that protects your phone from accidental damage
- Precise cut-outs allow full access to all the phones functionalities/ports and side buttons allow optimal responsive operation.
- Compatible with wireless charging devices




Fingerprint Resistant



Zero Bubble

**9H**  
9H Harder than a knife



0.33mm




Scratch Resistant



99.9% Transparency



Explosion Proof



3D Rounded Sides



## Tempered Glass

- Full back, front and side protection case
- Made from hard polycarbonate material with a tempered glass screen protector which offers 360 protection for your phone
- Slimline design enhances the original design of your phone
- § Precise cut outs allow easy access to all the phones features and ports



## JLC Explorer

- Full back and side protection case
- Made from a dual layer design which comprises of a soft silicone skin inner shell and an exterior polycarbonate shell for added protection
- The anti-shock feature protects the phone from scratches, bumps and accidental damage
- Precise cut outs allow full access to all functionalities and ports



## JLC Military

- Full back and side protection rugged case
- Made from a premium two-layer, shock absorbing polycarbonate and strong silicone
- Tough round corners offer robust protection and helps to protect your phone from accidental damage
- Precise cut-outs allow full access to all the phones functionalities/ports



Rugged



## JLC Tyre

- Full back and side protection rugged case
- Made from durable dual layer materials which comprise of a hard-thermoplastic shell and a strong silicone inner case
- Integrated kick stand feature allows hands-free access to calls and video calling
- Precise cut-outs allow full access to all functionalities and ports
- Integrated side buttons allow optimal operation



## Pelican Belt Clip

- Full back, front and side 360 rugged protection case
- Made from a triple layer design which consists of a solid inner shell, resilient outer slipcover and clear screen protector to help prevent accidental damage
- Port covers help to block dirt and dust from getting into the phone's ports
- This case offers a 360-belt clip which can also be used as a kickstand, allowing handsfree access to calls and video calling.





## JLC IP68 Infection Control

- Full back, front and side 360 protection waterproof case
- Made from heavy duty materials with a built-in screen that protects the phone from multiple weather conditions and accidental damage
- Precise cut outs, port covers and integrated buttons allow full access to all functionalities and ports
- IP68 certified waterproof design which has been tested to 6.7 feet under water (for up to 30 minutes)

 Waterproof



## JLC Taurus

- Full back and side protection rugged case
- Made from hard PC and flexible TPU materials
- Triple layer design provides extra protection from accidental damage
- Integrated kickstand allows hands-free viewing for videos and calls
- Precise cut-outs allow full access to all functionalities and ports
- This case comes with a sturdy and adjustable lanyard (for an additional cost) which is easily attached and removed from the case

 Rugged



## JLC Illusion

- Full back and reinforced side bumper case
- Lightweight and slim design with scratch-resistant back
- Made from a frosted hard back and soft silicone bumper
- Bumper edges help to protect the screen and camera
- Precise cut-outs provide full access to ports and functionalities
- Side buttons allow optimal responsive operation
- Compatible with wireless chargers

Great for  
Education



## Turtle Case

- Hard polycarbonate interior frame and triple-enforced shock absorbing silicone, helps to protect your case from accidental damage
- Easy grip design offers an additional layer of protection
- Kick stand with 3 different angles allows handsfree access and viewing
- Full access to all controls and features with precise cut-outs for the speakers, camera and other ports

P10

All cases available for multiple devices & Models

[jlcdistribution.co.uk](http://jlcdistribution.co.uk)



## JLC Veo

- Made from PC material to provide a durable design which offers comprehensive protection for your iPad
- Fully functioning Smart Cover supports the iPad's Sleep/wake feature
- The tri-fold front cover can support the iPad in two standing positions to provide hands free viewing



## JLC Tyre

- Dual layered design helps to protect your device from bumps, scrapes and accidental damage
- The textured finish and impact-resistant polycarbonate exoskeleton adds extra protection
- Precise cut-outs for the speakers, camera and other ports all access to all the devices features and ports
- An integrated kickstand allows handsfree access (for landscape viewing)



## JLC IP68 Infection Control

- Full back, front and side protection waterproof case
- Made from heavy duty materials with a built-in screen that protects the device from multiple weather conditions and accidental damage
- Precise cut outs, port covers and integrated buttons allow full access to all functionalities and ports
- IP68 certified waterproof design which has been tested to 6.7 feet under water (for up to 30 minutes)
- Comes with an adjustable shoulder strap



Waterproof

Rugged  
Option



## Wolverine Case

- Made of a polycarbonate hard shell and flexible silicone to prevent accidental damage
- Rugged 3-piece design
- Precise cut outs for all ports and functions allows easy access to all the tablets features
- 360 Degree rotatable kickstand and adjustable hand strap provides a multi-angle user experience
- Detachable and adjustable 5ft shoulder strap allows you to carry your device vertically or horizontally

P12



## JLC Halcyon

- Full back and side protection bumper case
- Made from a clear silicone with raised edges and reinforced corners help to protect the device and screen
- Precise cut outs allow easy access to all the tables features and ports
- Durable and anti-scratch material helps to prevent accidental drops and damage



## JLC Executive Wallet

- Made from high quality premium faux leather with a flip front cover to provide full screen protection
- This case has a flip front cover which can transform the case into a horizontal or vertical stand
- Fully functioning Smart Cover supports the iPad's Sleep/wake feature
- Full access to all controls and features with precise cut-outs for the speakers, camera and other ports



## JLC Clear Film

- Strong and durable HD clear film screen protector
- Offers long lasting protection against scratches and accidental damage
- Dust and fingerprint-free technology

Rugged  
Option



## Rhino Case

- Heavy duty 4-piece design made from durable polycarbonate and silicone materials
- Offers excellent protection for your device, helping to protect against shocks and accidental damage
- Shock absorbing pads built into the polycarbonate back panel help to give extra protection
- The built-in shatter-proof screen helps to protect your display from the outside environment
- Precise cut-outs allow full access to all the devices features and ports

P14



## JLC Active Headset

- Connection: USB
- Drive free: Plug and play
- Microphone: Noise cancelling microphone
- Controls: adjustable headphone and microphone volume
- Design: Lightweight and comfortable
- Microphone sensitivity:  $40\pm 3\text{dB}$  ( $0\text{dB}=1\text{V}/\text{Pa}$ , at 1KHz)
- Headphone Impedance: 150 ohms
- Headphone frequency range: 100-6600HZ
- Headphone sensitivity:  $100\pm 3\text{dB}$
- Environmental noise:  $\leq 60\text{dB(A)}$



## JLC Motion V2 Headset

- Lightweight, durable and comfortable adjustable headset to fit all users
- Made from high quality material with soft and comfortable ear cushions
- Connection: USB
- Drive free: Plug and play
- Material: ABS and PP
- Cable length: 2 meters
- Adjustable built-in noise cancelling microphone
- Adjustable headphone and microphone volume
- Microphone Sensitivity:  $40\pm 3\text{dB}$  ( $0\text{dB}=1\text{V}/\text{Pa}$  @ 1KHz)
- Headphone Impedance: 150 ohms



## JLC Motion Stereo USB Headset

- Connection: USB A
- Drive free: Plug and play
- Adjustable headphone and microphone volume
- Noise cancelling Microphone
- Microphone sensitivity:  $40\pm 3\text{dB}$  ( $0\text{dB}=1\text{V}/\text{Pa}$  at 1KHz)
- Headphone Impedance: 150 ohms
- Headphone frequency range: 100-6600HZ
- Headphone sensitivity:  $100\pm 3\text{dB}$
- Environmental noise:  $\leq 60\text{dB(A)}$



## Phonic Headset

- Connection: USB and 3.5mm
- Drive free: Plug and play
- Noise cancelling, unidirectional and adjustable microphone
- Controls: Headset on/off, microphone on/off and volume up/down
- Light weight and comfortable
- 90 degree rotating soft and breathable earpads

P16

*All headsets available with different connections*

[jlcdistribution.co.uk](http://jlcdistribution.co.uk)





## JLC Encore Wired Headset

- Connection: USB A
- Drive free: Plug and play
- Adjustable headphone and microphone volume
- Noise cancelling Microphone
- Microphone sensitivity:  $40\pm 3\text{dB}$  ( $0\text{dB}=1\text{V/Pa}$  at 1KHz)
- Headphone Impedance: 150 ohms
- Headphone frequency range: 100-6600HZ
- Headphone sensitivity:  $100\pm 3\text{dB}$
- Environmental noise:  $\leq 60\text{dB(A)}$



## JLC Encore Wireless Headset

- Bluetooth Specification: V5.0, dual mode, downward compatible.
- (Bluetooth dongle not included)
- Wireless charging via docking station
- Frequency Range: 2.4GHz - 2.48GHz
- Support Protocols: A2DP, AVRCP, HFP, AAC, etc.
- Transmission distance: up to 30 meters (Transmission distance varies on base of the environment and Bluetooth device)
- Maximum Talk Time: 20 hours
- Standby Time: 200 hours
- Charging Time: 2 hours



## JLC Encore Mono Wireless Headset

- Bluetooth Specification: V5.0, dual mode, downward compatible.
- (Bluetooth dongle not included)
- Wireless charging via docking station
- Frequency Range: 2.4GHz - 2.48GHz
- Support Protocols: A2DP, AVRCP, HFP, AAC, etc.
- Transmission distance: up to 30 meters (Transmission distance varies on base of the environment and Bluetooth device)
- Maximum Talk Time: 20 hours
- Standby Time: 200 hours
- Charging Time: 2 hours

Budget  
Option



## Pilot Mono Headset

- Connection: USB
- Outside diameter :28mm
- Frequency response: 150HZ~ 4.5khz
- Rated input power: 30mW
- maximum endurance power :50mW
- Integrated microphone
- Directivity: Single pointing

*All headsets available with different connections*

P18



## JLC Motion Mono USB Headset

- Noise cancelling Microphone
- Microphone sensitivity:  $40\pm 3\text{dB}$  ( $0\text{dB}=1\text{V/Pa}$ , at 1KHz)
- Headphone Impedance: 150 ohms
- Headphone frequency range: 100-6600HZ
- Headphone sensitivity:  $100\pm 3\text{dB}$
- Environmental noise:  $\leq 60\text{dB(A)}$
- Lightweight and comfortable to wear



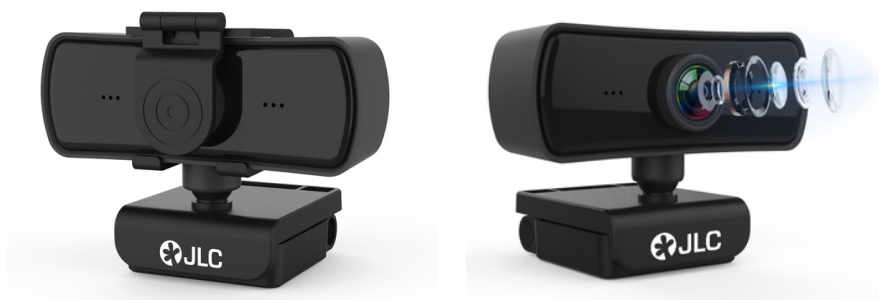
## JLC Pilot Mono RJ9 Headset

- Connection: USB
- Outside diameter :28mm
- Frequency response: 150HZ~ 4.5khz
- Rated input power: 30mW
- maximum endurance power :50mW
- Integrated microphone
- Directivity: Single pointing
- Size:  $\Phi 6 \times 2.7 \text{ mm}$
- Frequency range :50HZ~ 3.0khz
- Sensitivity:  $-44\pm 3\text{dB}$



## JLC Wireless Bluetooth Skype Mono Headset

- Bluetooth Version V4.1
- Built in Bluetooth
- USB charging docking station
- Noise cancelling microphone
- Chipset: CSR8615
- Operating range: 10 Meters
- Battery Capacity: 180 MAH - rechargeable
- Working time: Max 17 hours
- Charge time: 2 Hours



## 2k Optic Webcam

- Wide-angle HD lens & built-in noise reduction microphone
- Privacy cover
- Resolution: 2560 x 1440 pixels
- Connection: USB 2.0
- Viewing angle: 126° (360° Rotating)
- Cable length: 1.4m
- Drive free: plug and play



## JLC 360 Webcam

- Resolution: 1920 x 1080p
- Connection: USB 2.0
- Built in microphone
- Auto focus range: 20mm
- Viewing angle: Diagonal 68-70°, Horizontal 58°
- 360-degree rotating base
- Plug and Play – Drive free
- Sensor: CMOS
- Video format: AVI
- Frame rate: 30FPS



## JLC 1080p Webcam

- Resolution: 1920 x 1080P
- Connection: USB 2.0
- Sensor: Full HD CMOS sensor
- FPS: 25
- Lens: 5-layer optical lens
- 360° rotation
- Drive free – plug and play
- Manual focus (SLR principle)
- Automatic light enhancement suitable for poor lighting conditions



## JLC Horizon Webcam

- Multifunctional base: suitable for desktops or on LCD screens
- 360 rotating base and adjustable viewing angle
- Viewing angle: est 90°, Diagonal 68-70°, Horizontal 58°
- Full HD: 1920 x 1080p
- 2 Mega Pixels
- Sensor Type: CMOS
- Video Format: AVI
- Frame rate: 30 FPS
- Photo format: BMP/JPG
- Output format: M-JPEG



## Wavlink USB C Dual 4K Docking Station

- Two USB 3.0 (5Gbps) Type-A ports
- Two USB-C (5Gbps) ports
- One 3.5mm Audio output port
- One 3.5mm Mic input port
- ON/OFF power switch
- One Gigabit Ethernet port
- Power port
- Two HDMI video output ports
- Two DISPLAYPORT video output ports
- One USB-C port (Connect to laptop)
- Two USB 3.0 (5Gbps) Type-A ports



## Wavlink USB C Quad 4K Universal Docking Station

- 4 x HDMI - support audio 5.1 Channel surround-sound.
- 4 x DisplayPort - support audio 5.1 Channel surround-sound.
- 1 x TRRS 4 Pole 3.5mm Phone Jack
- 1 x 2.5 Gigabit RJ45 Ethernet Port
- 1 x USB C 3.1 Upstream
- 1 x Type-C (downstream, no data)
- 4 x USB A 3.1
- 1 x Lock Slot
- SD V4.0 SD/Micro SD Card Reader with
- 2 x DC Jack
- Power Switch



## VEO X900 Universal Docking Station (Type C)

- Up to 100W PD Charging (power adapter included)
- Display:
  - 2 x DisplayPort 1.4 - 4K (3840 x 2160) 60HZ/10bit video output
  - 1 x HDMI - 1 port 4K/60HZ/10bit
- 3 x USB 3.0 - high-speed data transmission up to 5Gbps
- 1 x USB-C 3.1 - 10Gbps transfer
- 1 x USB-A 3.1 - 10Gbps transfer
- 1 x Audio/Mic Jack
- 1 x RJ45 Gigabit Ethernet - 1Gbps
- 1 x USB 2.0
- 1 x TF 3.0
- 1 x SD 4.0 - Support SD/TF card reading at the same time, maximum support 2TB





## VEO X700 Universal Docking Station (Type C)

- Up to 100W PD Charging (power adapter included)
- Display:
  - 1 x DisplayPort 1.4 - 4K (3840 x 2160) 60HZ/10bit video output
  - 1 x HDMI - 1 port 4K/60HZ/10bit
  - 1 x HDMI - 1 port 4K/30HZ/8bit
- 3 x USB 3.0 - high-speed data transmission up to 5Gbps
- 1 x USB-C 3.1 - 10Gbps transfer
- 1 x USB-A 3.1 - 10Gbps transfer
- 1 x Audio/Mic Jack
- 1 x RJ45 Gigabit Ethernet - 1Gbps
- 1 x USB 2.0
- 1 x TF 3.0
- 1 x SD 4.0 - Support SD/TF card reading at the same time, maximum support 2TB



## JLC N4 Type C 4 Port Adapter - Grey

- Type C to:
- 2 x HDMI (Supports 4K 30HZ)
- 1 x USB 3.0
- 1 x PD 2.0 (only suitable for charging)



## JLC StarTech USB -C Multiport Adapter

- USB-C hub adapter is compatible with laptops.
- X2 Type-C/USB3.0
- 1X PD port
- X1 4K HDMI
- X1 VGA
- X1 RJ45 1000M Ethernet interface
- X2 SD/Micro SD
- X1 Output resolution 4K
- X1 1080P @ 60 Hz



## JLC Type C 87W 7 Port Adapter - Grey

- Type C to:
- 1 x HDMI
- 1 x VGA
- 1 x Gigabit Ethernet Port
- 1 x USB 3.0
- 1 x USB C PD
- 1 x SD card
- 1 x 3.5mm Audio
- 87W



## JLC Z20 Type C 12 Port Adapter - Grey

- Type C to:
- 1 x Type C PD
- 2 x HDMI 4K
- 2 x USB 3.0
- 2 x USB 2.0
- 1 x Audio
- 1 x RJ45
- 1 x VGA
- 1 x SD card slot
- 1 x TF card slot



## JLC Micro USB (Female) to Type C (Male) Cable - 20CM - Black

- Suitable for USB/Type C compatible tablets and smartphones
- High-quality PVC materials helps to prevent kinks and accidental damage
- Compatible for use with most cases



## JLC HDMI (Male) to HDMI (Male) Cable - 1.8M - Black

- 1.8m Cable
- HDMI (Male) to HDMI (Male)
- Black Cable



## JLC MFI Type C (Male) to Lightning (Male) Cable - 20CM - White

- 20cm cable
- Type C (Male) to Lightning (Male)